



Matthews Glen

Where Loving-Kindness Lives



FLOOR PLANS

Campus Site Plan

Campus Map Guide

- APARTMENT HOMES
- VILLAS
- NEW APARTMENT HOMES AND VILLAS
- CLUBHOUSE WITH POOL AND FITNESS CENTER
- OAKBRIDGE TERRACE ASSISTED LIVING
- WILLOWBROOKE COURT SKILLED CARE & REHABILITATION

Local Points of Interest

- ADJACENT TO COMMUNITY**
Four Mile Creek Greenway
- 0.5 MILES**
Downtown Matthews
- 2.0 MILES**
Novant Health Matthews Medical Center
- 9.3 MILES**
Mint Museum
- 12 MILES**
Blumenthal Performing Arts
- 12.2 MILES**
Spectrum Center
- 13.5 MILES**
Bank of America Stadium
- 13.6 MILES**
Billy Graham Library
- 18.7 MILES**
Charlotte Douglas International Airport



Final configurations and dimensions may vary slightly from this plan.

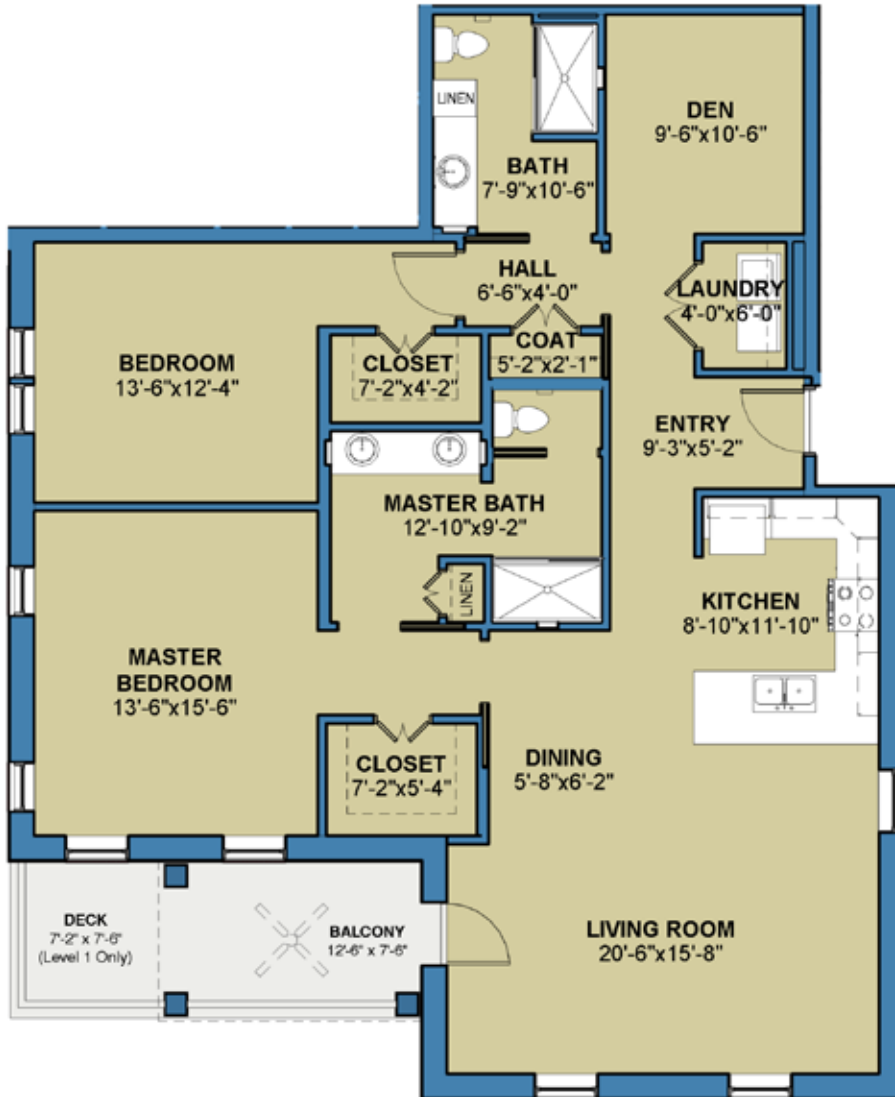
NEW APARTMENT HOMES



NEW VILLAS

These renderings are for illustrative purposes only. Final buildings and landscape may vary.

MAISON COURT APARTMENTS

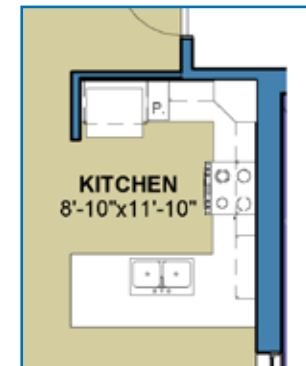


Seagrove Apartment

APPROXIMATE SQUARE FOOTAGE

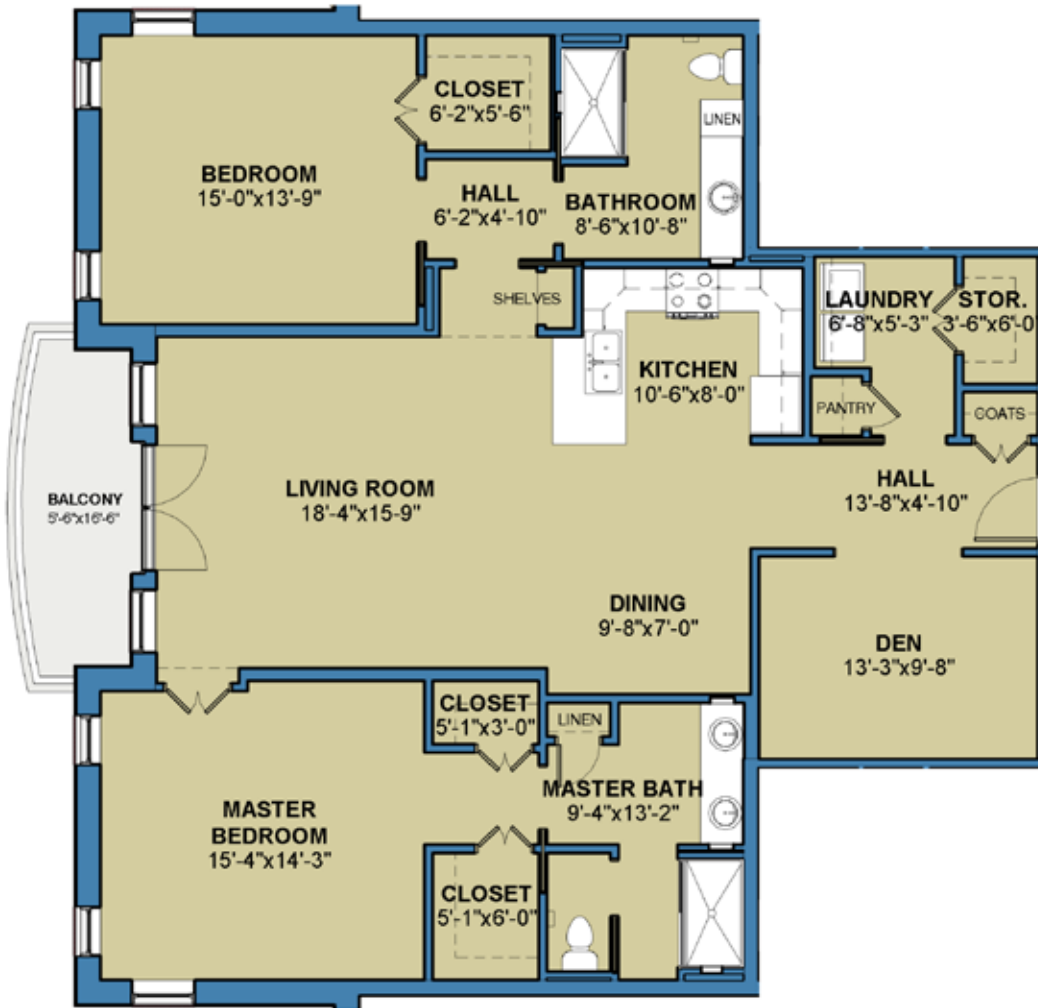
1,650 Sq. Ft.

TWO BEDROOM/DEN



KITCHEN WITH PANTRY OPTION

Final configurations and dimensions may vary slightly from this plan. Room dimensions are approximate.



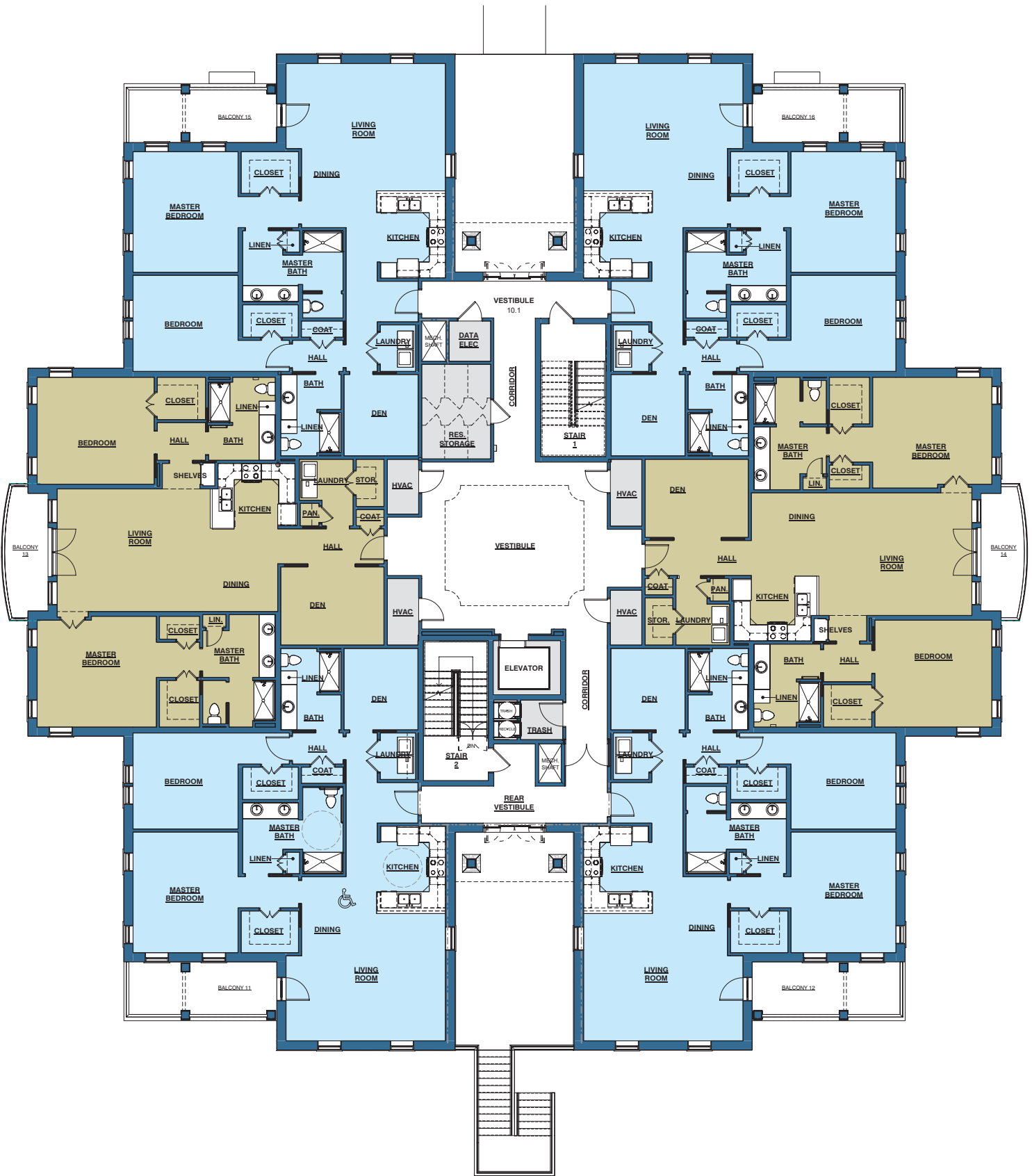
Southern Pines Apartment

APPROXIMATE SQUARE FOOTAGE

1,785 Sq. Ft.

TWO BEDROOM/DEN

Final configurations and dimensions may vary slightly from this plan. Room dimensions are approximate.



Matthews Glen

Where Loving-Kindness Lives

Apartment Building Main Level

Final configurations and dimensions may vary slightly from this plan.

VILLAS



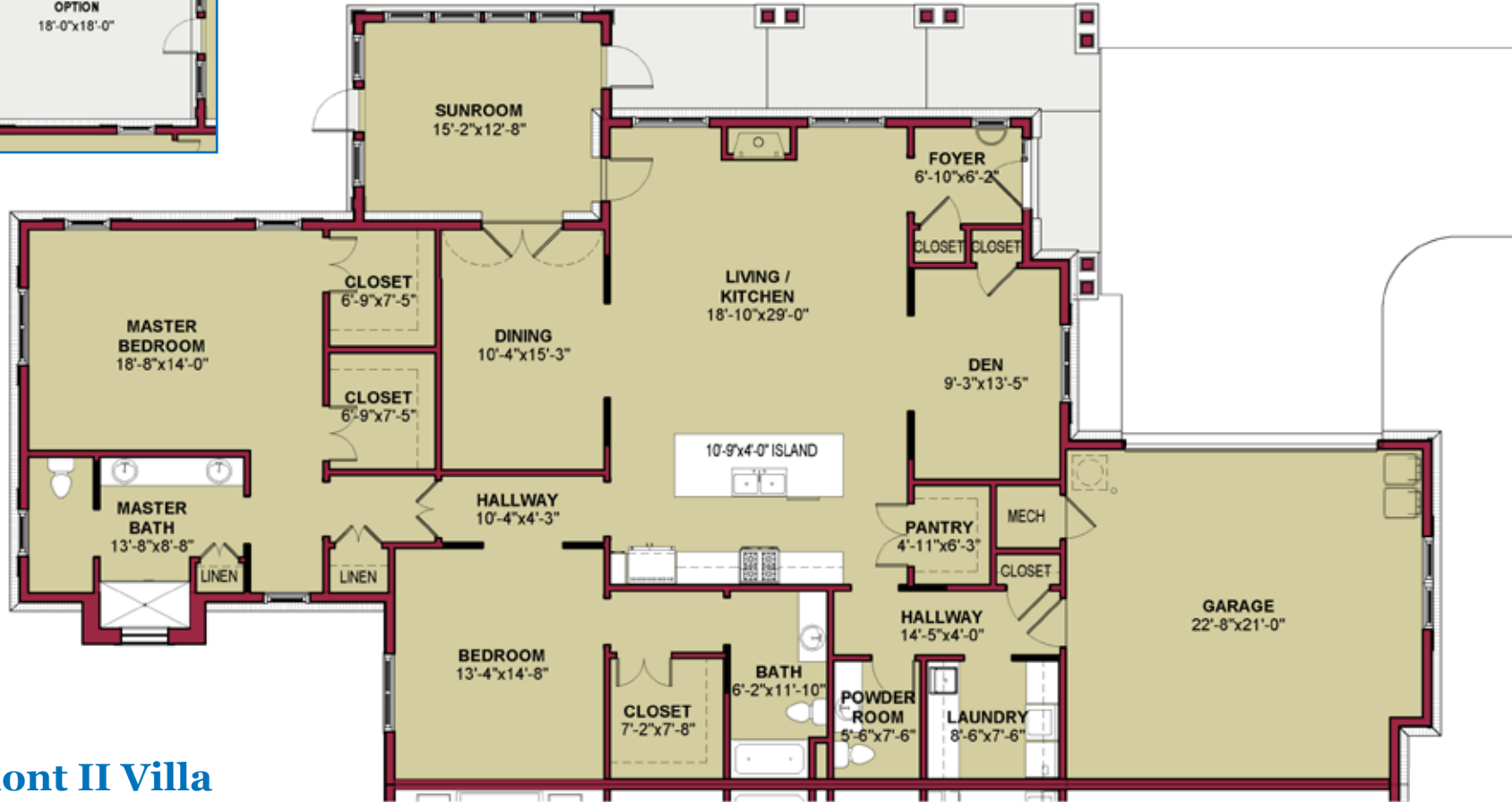
Belmont I Villa

APPROXIMATE SQUARE FOOTAGE

2,275 Sq. Ft.

TWO BEDROOM/DEN

Final configurations and dimensions may vary slightly from this plan. Room dimensions are approximate.



Belmont II Villa

APPROXIMATE SQUARE FOOTAGE

2,500 Sq. Ft.

TWO BEDROOM/DEN/SUNROOM

Final configurations and dimensions may vary slightly from this plan. Room dimensions are approximate.



CLUBHOUSE EXTERIOR



APARTMENT INTERIOR

Interior pictures are for illustrative purposes only. Final finishes and configurations may vary.

Apartment & Villa Features

- Open style floor plan
- Large windows to maximize natural light
- Well-equipped kitchen with undercabinet lighting
- Master suite bath with water closet
- Walk in closets for each bedroom
- Pocket doors in many locations
- Resident alert call system
- Smart home components

Additional Apartment Features:

- 9'0" ceiling heights for living/dining areas and bedrooms
- Covered parking located beneath building
- Outdoor balconies/patios
- Additional storage

Additional Villa Features:

- 10'0" ceiling heights in most spaces, cathedral ceiling in living room
- Direct-vent natural gas fireplace
- Outdoor spaces like a covered open-air patio, screened porch option or sunroom
- Powder room
- Two-car garage



Campus Features

- 5 restaurants, including pub
- Indoor exercise pool & indoor lap pool
- Campus shuttle service
- Community garden
- 2 fitness centers
- Library
- Convenient access to greenway
- Chapel
- 2 performing arts centers
- Billiards
- Game rooms
- Gazebo/patios
- Wood workshop

Coming Soon:

- Tennis and pickleball courts
- Outdoor amenities like bocce ball, shuffleboard and putting green
- Dog park





Matthews Glen

Where Loving-Kindness Lives

A woman with blonde hair, wearing a red blazer, is sitting at a table and pointing at a laptop screen. She is smiling and looking towards an older man and woman who are also smiling and looking at the laptop. The man is wearing a light blue button-down shirt, and the woman is wearing a blue blazer and a patterned scarf. There are two glasses of water on the table in front of them. The background is a bright, modern interior with a potted plant on a white table.

Signature PRICING



Matthews Glen

Where Loving-Kindness Lives

APARTMENT & VILLA EXPANSION

LIVING ACCOMMODATION	APPROX. SQ. FT.	ENTRANCE FEE		2021 MONTHLY FEE	SECOND PERSON MONTHLY FEE
Seagrove Residence					
Acts Life Care Premier	1,670	\$488,900		\$4,271	\$1,917
		UP TO AGE 79	AGE 80-89		
Acts Life Care 50	1,670	\$708,900	\$777,900	\$4,698	\$2,109
Acts Modified Life Care	1,670	\$440,900		\$3,844	\$1,917
Second Person Entrance Fee		\$30,000			
LIVING ACCOMMODATION	APPROX. SQ. FT.	ENTRANCE FEE		2021 MONTHLY FEE	SECOND PERSON MONTHLY FEE
Southern Pines Residence					
Acts Life Care Premier	1,755	\$510,900		\$4,406	\$1,917
		UP TO AGE 79	AGE 80-89		
Acts Life Care 50	1,755	\$740,900	\$812,900	\$4,847	\$2,109
Acts Modified Life Care	1,755	\$464,900		\$3,965	\$1,917
Second Person Entrance Fee		\$30,000			

Entrance fees subject to change without notice. Monthly fees may change with 60 days written notice. You will be expected to pay the monthly fee in effect at the time you take occupancy of your residence.



Matthews Glen

Where Loving-Kindness Lives

APARTMENT & VILLA EXPANSION

LIVING ACCOMMODATION	APPROX. SQ. FT.	ENTRANCE FEE		2021 MONTHLY FEE	SECOND PERSON MONTHLY FEE
Belmont Villa					
Acts Life Care Premier	2,330	\$640,900		\$4,980	\$1,917
		UP TO AGE 79	AGE 80-89		
Acts Life Care 50	2,330	\$929,900	\$1,019,900	\$5,478	\$2,109
Acts Modified Life Care	2,330	\$596,900		\$4,482	\$1,917
Second Person Entrance Fee		\$30,000			
LIVING ACCOMMODATION	APPROX. SQ. FT.	ENTRANCE FEE		2021 MONTHLY FEE	SECOND PERSON MONTHLY FEE
Belmont II Villa Sunroom					
Acts Life Care Premier	2,533	\$672,900		\$4,980	\$1,917
		UP TO AGE 79	AGE 80-89		
Acts Life Care 50	2,533	\$975,900	\$1,069,900	\$5,478	\$2,109
Acts Modified Life Care	2,533	\$625,900		\$4,482	\$1,917
Second Person Entrance Fee		\$30,000			

Entrance fees subject to change without notice. Monthly fees may change with 60 days written notice. You will be expected to pay the monthly fee in effect at the time you take occupancy of your residence.

Acts Life Care Premier Details

- Acts Life Care Premier entrance fees effective January 1, 2021. Monthly fees effective January 1, 2021. Pricing is subject to change without notice. Upon occupancy, the company provides 60-days notice prior to changes in the monthly fee or other ancillary charges.
- Entrance fee becomes firm upon payment of 10% of the entrance fee (less the Priority Deposit) at signing of the Unit Selection Contract.
- During the first 120 days of occupancy, the entrance fee is 100% refundable for any reason.
- After the 120th day of occupancy, the refund will be calculated by amortizing the entrance fee (minus a 5% administrative fee) by 2% for each month of occupancy in the independent living residence, and by 4% for each month of occupancy on a permanent basis in the Assisted Living or Skilled Care Centers. At the end of the period of amortization, which shall be at most 50 months, there will be no refund.
- Specific terms and conditions apply. Please refer to Resident Contract and Disclosure Statement.

Acts Life Care 50 Details

- Entrance fees effective January 1, 2021. Monthly fees effective January 1, 2021. Pricing is subject to change without notice. Upon occupancy, the company provides 60-days notice prior to changes in the monthly fee or other ancillary charges.
- Entrance fee becomes firm upon payment of 10% of the entrance fee (less the Priority Deposit) at signing of the Unit Selection Contract.
- During the first 120 days of occupancy the entrance fee is 100% refundable for any reason.
- After the 120th day of occupancy, the refund will be calculated by amortizing the entrance fee (minus a 5% administrative fee) by 2% for each month of occupancy in the independent living residence, and by 4% for each month of occupancy on a permanent basis in the Assisted Living or Skilled Care Centers. The entrance fee will cease amortizing and becomes firm when it reaches 50% of the net entrance fee.
- Specific terms and conditions apply. Please refer to Resident Contract, 50% Refundable Plan addendum, and Disclosure Statement.

Acts Modified Life Care Details

The Modified Life Care Plan is designed for residents who have a long-term care insurance policy and wish to retain their policy after moving to an Acts community.

Under the terms of the Modified Life Care Plan, residents pay a lower entrance fee and lower monthly fee with this plan during their time in independent living. If they later require care, their long-term care insurance policy will be used toward their per diem care costs for a cumulative period of three (3) years, after which their fees revert to the then-current Acts Modified Life Care monthly fee.

- Entrance fees are effective January 1, 2021. Monthly fees are effective January 1, 2021. Pricing is subject to change without notice. Upon occupancy, the company provides 60-days notice prior to changes in the monthly fee or other ancillary charges.
- Entrance fee becomes firm upon payment of 10% of the entrance fee (less the Priority Deposit) at signing of the Unit Selection Contract.
- During the first 120 days of occupancy, the entrance fee is 100% refundable for any reason.
- After the 120th day of occupancy, the refund will be calculated by amortizing the entrance fee (minus a 5% administrative fee) by 2% for each month of occupancy in the independent living residence, and by 4% for each month of occupancy on a permanent basis in the Assisted Living or Skilled Care Centers. At the end of the period of amortization, which shall be at most 50 months, there will be no refund.
- The maintenance of a long-term care insurance policy is required.
- Specific terms and conditions apply. Please refer to the Resident Contract, Modified Healthcare Plan addendum and Disclosure Statement for further details.

Monthly Fee

The monthly fee includes:

Utilities/Taxes

Water, heat, electricity, air conditioning, standard cable television, premium Wifi, smart home technology, property taxes.

Maintenance

Repairs, maintenance and replacement of equipment, exterior cleaning, groundskeeping including lawn service.

Personal Services

One chef-prepared meal for each day of the month (additional meals available), life engagement opportunities catering to a wide spectrum of interests, 24-hour security, 24-hour access to a resident nurse, nurse practitioner services, medical alert system, wellness services, light housekeeping twice per month, annual residence inspection and cleaning, weekly linen laundering and changing, access to either personal or shared laundry facilities, resident technology assistance, scheduled local transportation, additional storage.



Where Loving-Kindness Lives

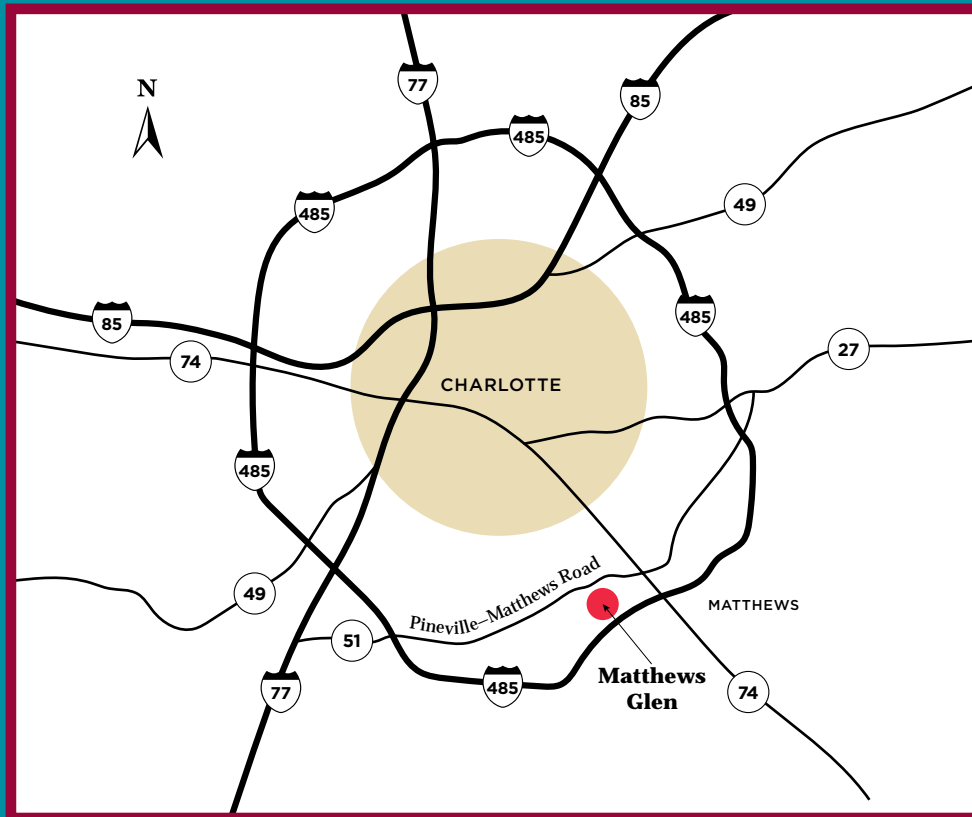
Directions

FROM DOWNTOWN CHARLOTTE

Take Highway 74 east until you reach Highway 51.

Turn right (south) and drive two miles.

Matthews Glen will be on your left, near the corner of Sardis Road.



Matthews Glen

733 PLANTATION ESTATES DRIVE

MATTHEWS, NC 28105

855-976-5671

ABOUTACTS.COM/MATTHEWSGLEN



Acts is a not-for-profit organization pledged to the letter and spirit of U.S. policy for the achievement of equal housing opportunity throughout the nation. We encourage and support programs in which there are no barriers to obtaining housing because of race, color, religion, sex, handicap, familial status or national origin.

