

Building the Dream . . .

Supporting this project with a tax-deductible, charitable donation to Acts Legacy Foundation will help us to fulfill the needs of Buckingham's Choice residents.

Thank you for your invaluable support that will help our community grow. Consider ways that you might become involved in this effort and the events and activities of this campaign.

Gifts at all levels will be significant and will make a lasting impact on our community and the residents who call Buckingham's Choice home.

Levels of Investment

\$150,000+

\$100,000 - \$149,999

\$50,000 - \$99,999

\$25,000 - \$49,999

\$10,000 - \$24,999

\$5,000 - \$9,999

\$3,000 - \$4,999

\$1,000 - \$2,999

< \$1,000

. . . and Improving Our Tomorrow Together

Donation forms and envelopes can be obtained at the Front Desk. Please reach out to discuss donating or to obtain more information about supporting this project through:

- Income producing Charitable Gift Annuity
- IRA Charitable Distribution
- Gift of Appreciated Stock or Securities
- Gift From a Donor Advised Fund
- Gifts made in Honor or Memory of a friend or loved one

**Michael Martin, Director, Acts Legacy Foundation
Mid-Atlantic Region**

Toll Free: 877-287-0799 Direct: 302-307-9602

Acts Legacy Foundation supports the vision of Acts Retirement-Life Communities to be the nation's leading continuing care retirement organization, where loving-kindness permeates the very fiber of our culture.

Acts Legacy Foundation ("ALF") is a 501(c)3 Delaware non-profit organization that supports the programs and missions of the following Maryland non-profit organizations: Heron Point of Chestertown, Inc., Fairhaven, Inc., Buckingham's Choice, Inc., and Bayleigh Chase, Inc. Financial and other information about their purpose, programs and activities can be obtained by contacting Ray Boyle at 420 Delaware Drive, Fort Washington, PA 190340, phone number (877) 287-0799, website ActsLegacyFoundation.org, or as stated below.

A copy of the current financial statement of Acts Legacy Foundation, Inc. is available by writing to Acts Legacy Foundation, 420 Delaware Drive, Fort Washington, PA 19034 or by calling (877) 287-0799. Documents and information submitted under the Maryland Solicitations Act are also available, for the cost of postage and copies, from the Maryland Secretary of State, State House, Annapolis, MD 21401, (410) 974-5535.

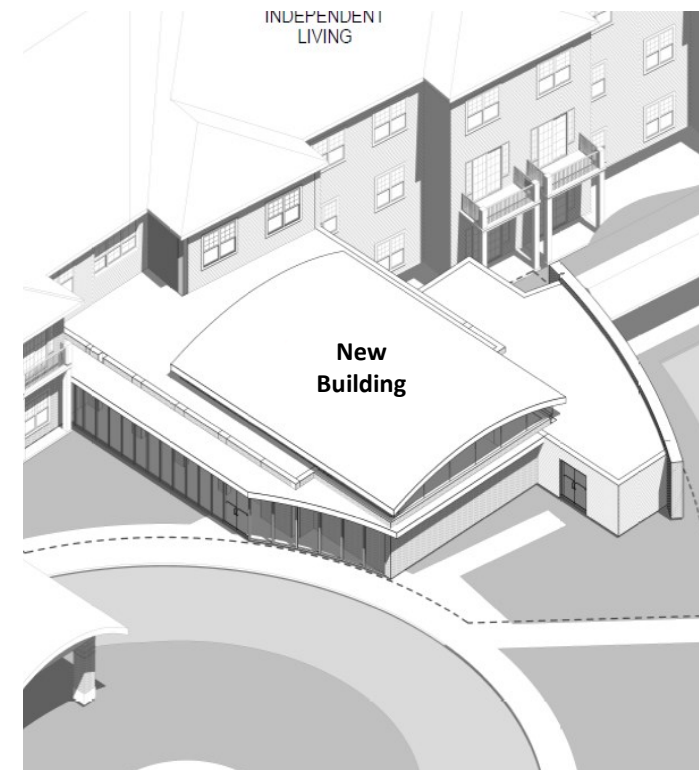


Making New Space

Imagine a future at Buckingham's Choice with a dedicated space for gatherings, events, and programs that encourage engagement and inspire our community. This vision is within reach, grounded in the hopes of residents past and present.

In 2007, a group of pioneering residents recognized the need for a larger, versatile auditorium. They began a fundraising effort to bring this idea to life. Then, in 2018,

Residents' Association-led focus groups reaffirmed this need, showing a strong, ongoing desire for additional meeting and activity space.



Although progress has been delayed, the original funds remain preserved for this purpose. Today, the Making New Space Capital Campaign Committee and Acts Legacy Foundation are honored to carry this vision forward, blending the dreams of those who began this journey with the needs of our community today.

Thank you for helping us fulfill this long-awaited vision, a space that honors our shared past and embraces our future together.

A True Collaborative Effort

In 2022 and 2023, the Residents' Association, special interest group leaders, residents, and team members came together in a series of collaborative meetings. This collaboration helped evaluate the project's feasibility and shape the design and features of the new building. The result is a truly customized space, crafted to meet the unique needs of our community, and will bring our vision to life.

Living Vibrantly

The single, multi-purpose space currently on campus hosts more than 50 activities each month. People gather for worship, line dancing, fitness classes, performances, and so much more.

Acts is committed to supporting the Buckingham's Choice community through an investment in this capital project to construct a new multi-purpose space, able to accommodate more activities and performances on a more flexible scale. This collaboration with Acts will enhance the facilities that support active living and create new opportunities for resident engagement at Buckingham's Choice.

This goal will be accomplished only through charitable contributions from the community. This is an opportunity to build the future of Buckingham's Choice to meet the needs of today and create opportunities for tomorrow.

"We invite you to join us in supporting this vital project that addresses our community's needs—not only for today but for years to come."

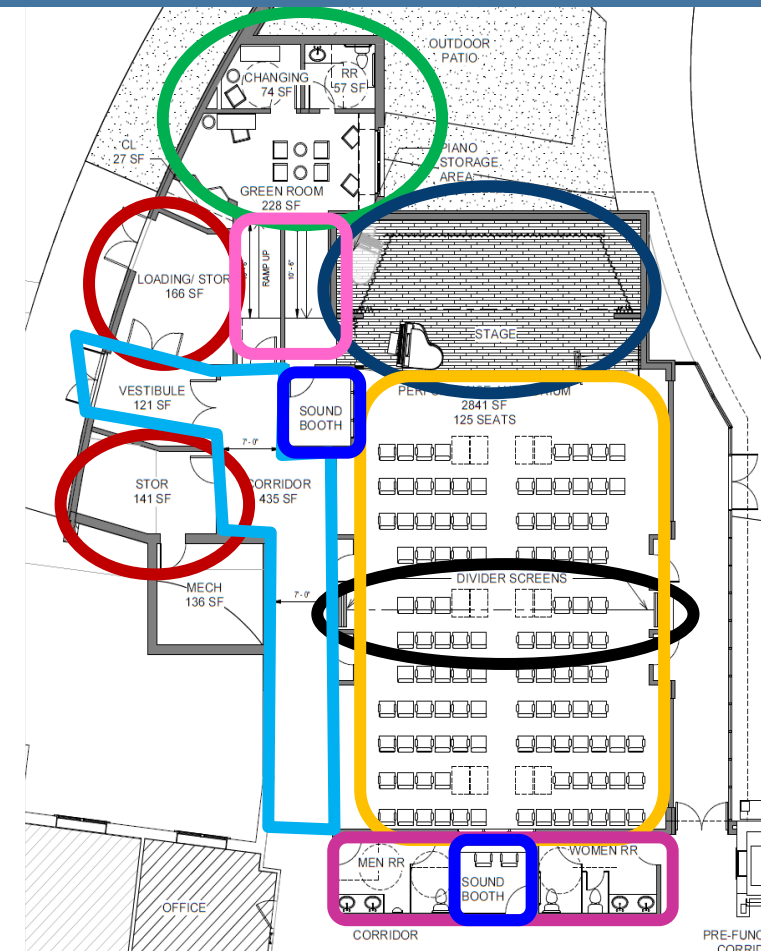
*Jim Ryan & Charlotte Pascoe,
Campaign Committee
Co-Chairs*

Investing in Our Future

- The proposed new building has an estimated cost of \$4 million.
- Acts Retirement-Life Communities has committed \$2 million to this effort.
- Original donations from the 2007-08 pioneer fundraising effort will support this project with an approximate present value of \$461,000.
- An additional \$1.5 million will need to be raised through charitable donations to realize this vision for Buckingham's Choice.



"They really listened to us as we proposed changes or additions that would make the space more useful for our needs. The current plan will give us a much-needed flexible place for meetings and small group activities, as well as an auditorium and stage for performances." ~Susie Reiter, Resident



Key Features

- Large Stage
- Green Room & Powder Room
- Storage
- Movable Partition Wall
- Non-fixed Seating for 125
- Connection to Existing Covered Walkway
- Handicap Access to Green Room and Stage
- Additional Restrooms
- Two AV Control Rooms

Expanded Opportunities & Benefits

Now is the time to come together and join us in supporting this project. Consider the profound impact of this new space for current and future residents.

- Dedicated performance and gathering space to flexibly seat up to 125 or configured with tables to seat up to 80.
- A moveable partition wall for further flexibility.
- State of the art sound & lighting, elevated stage with handicap accessibility.
- Capability to host large-scale productions with artist-friendly accommodations.
- Connection to existing walkway and additional front circle entrance for equipment and performers.